

**ATLAS
ARENA**
Amsterdam

AUSTRALIA

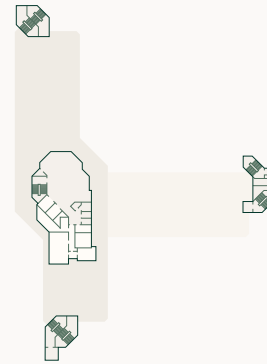
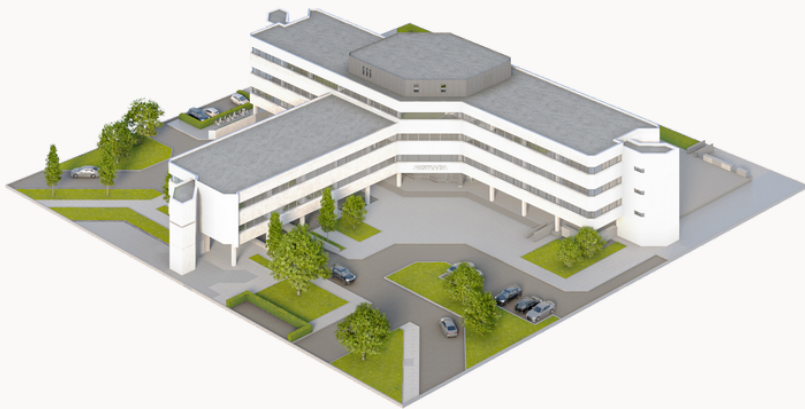
Building floor plans



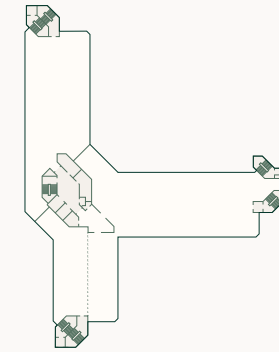
AUSTRALIA

The Australia building has a total floor area of 5,150 m² and is our smallest building.

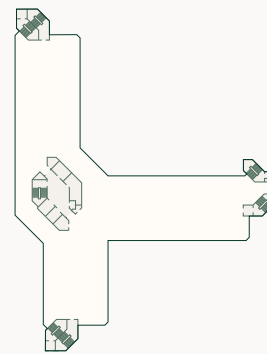
Floor 1 - unit 1 1,261 m²
Total available space 1,261 m²



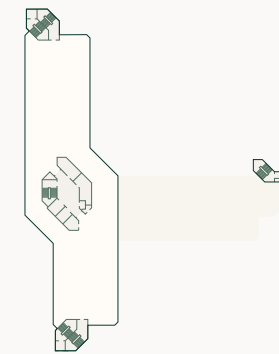
Ground floor



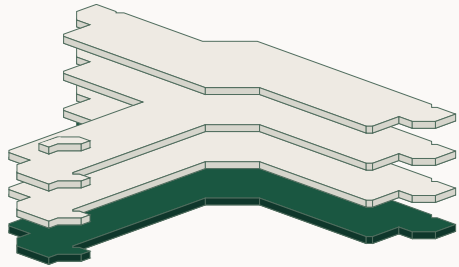
Floor 1



Floor 2






Floor 3

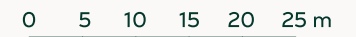
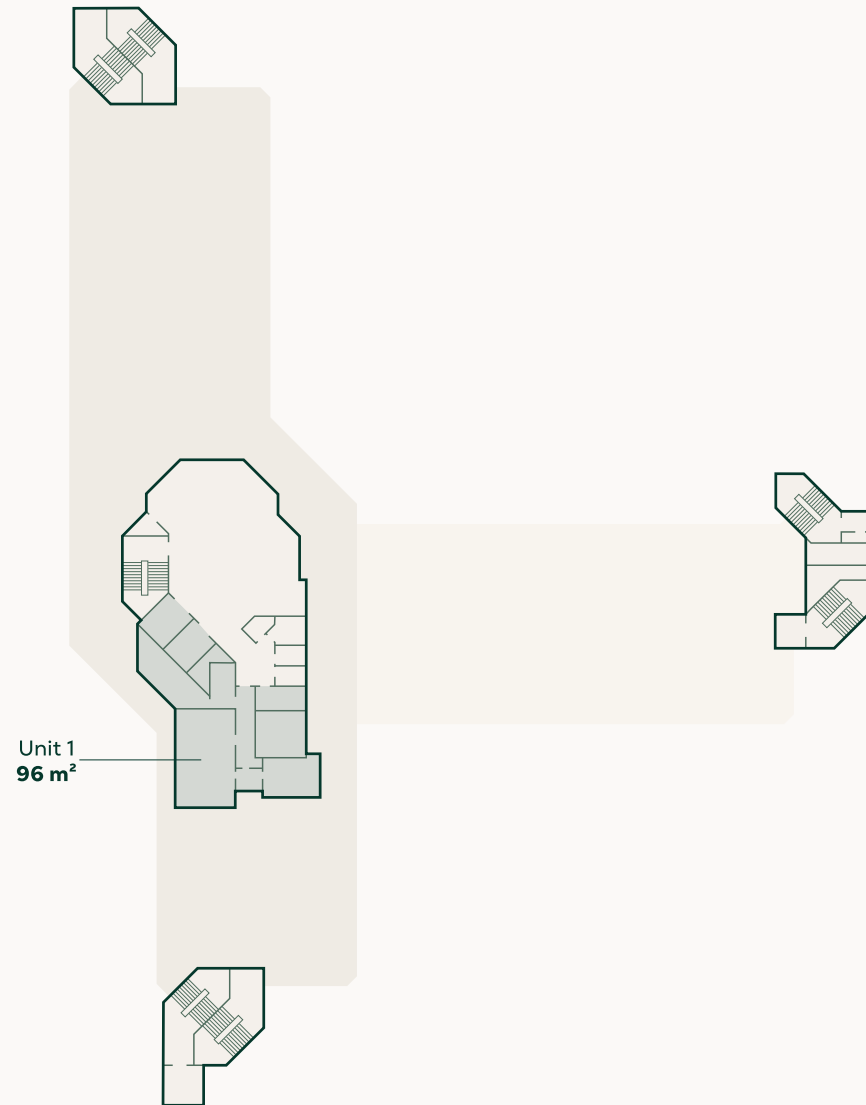


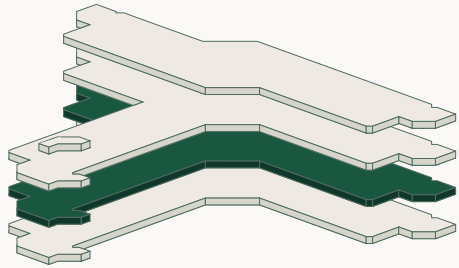
AUSTRALIA

Ground floor

The ground floor is divided into lettable space and common space. The lettable space consists of 96 m² and is currently occupied.

-  Common space
-  Available office space
-  Non-available office space






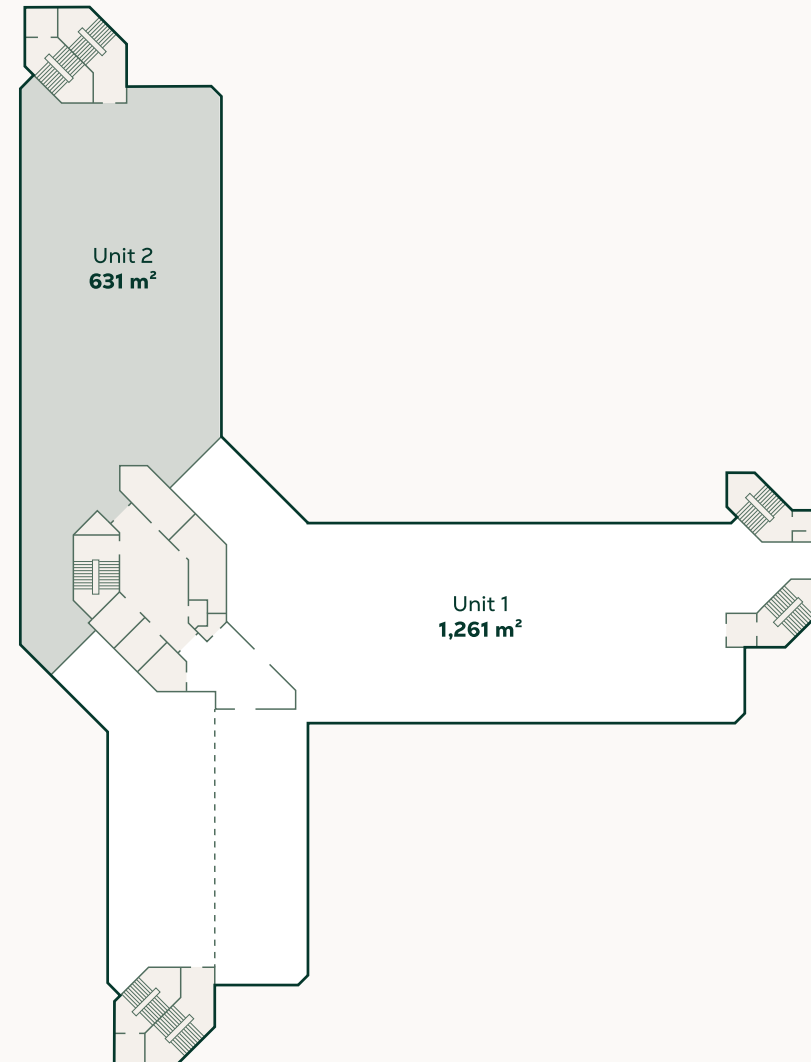


AUSTRALIA

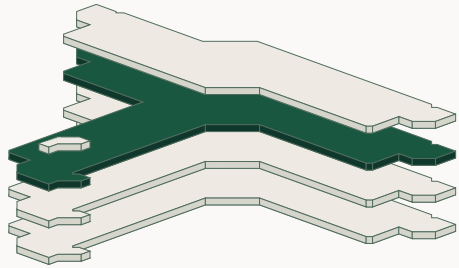
Floor 1

The first floor is divided into two units. Unit 1 is currently available and has a total lettable floor area of 1,261 m².

-  Common space
-  Available office space
-  Non-available office space






0 5 10 15 20 25 m

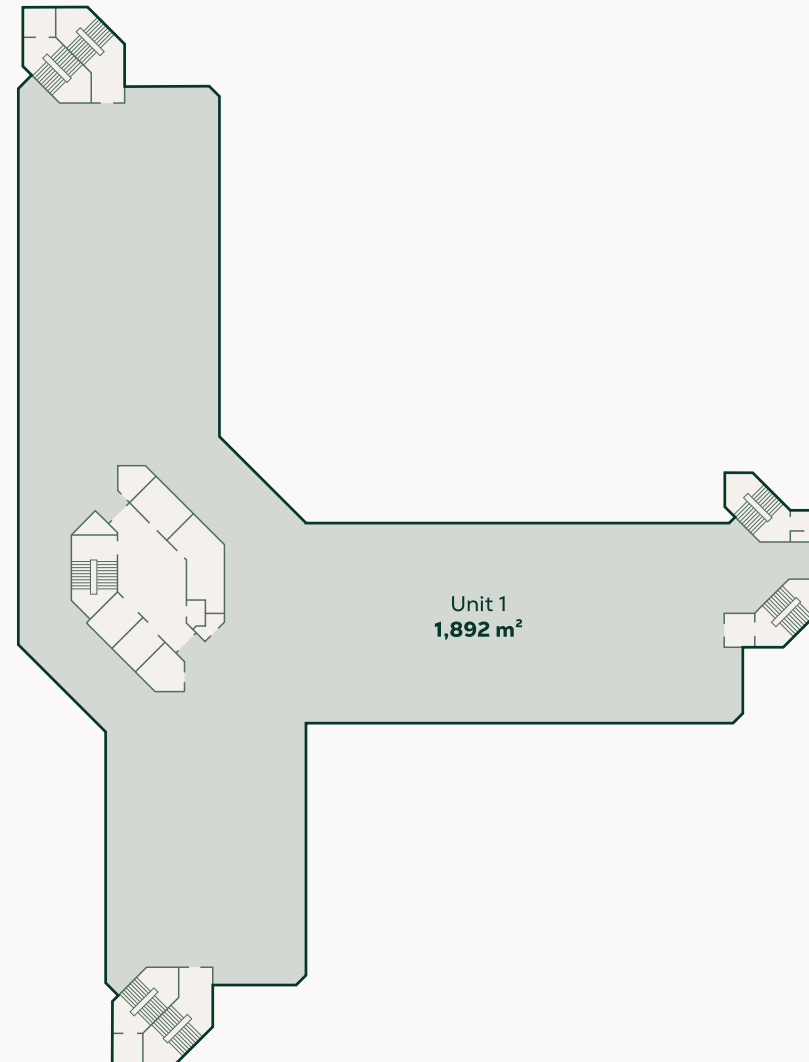


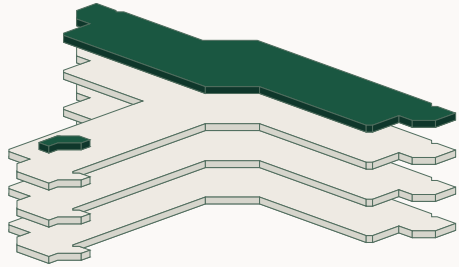
AUSTRALIA

Floor 2

The second floor has one unit of 1,892 m² and is currently fully let.

-  Common space
-  Available office space
-  Non-available office space






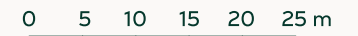
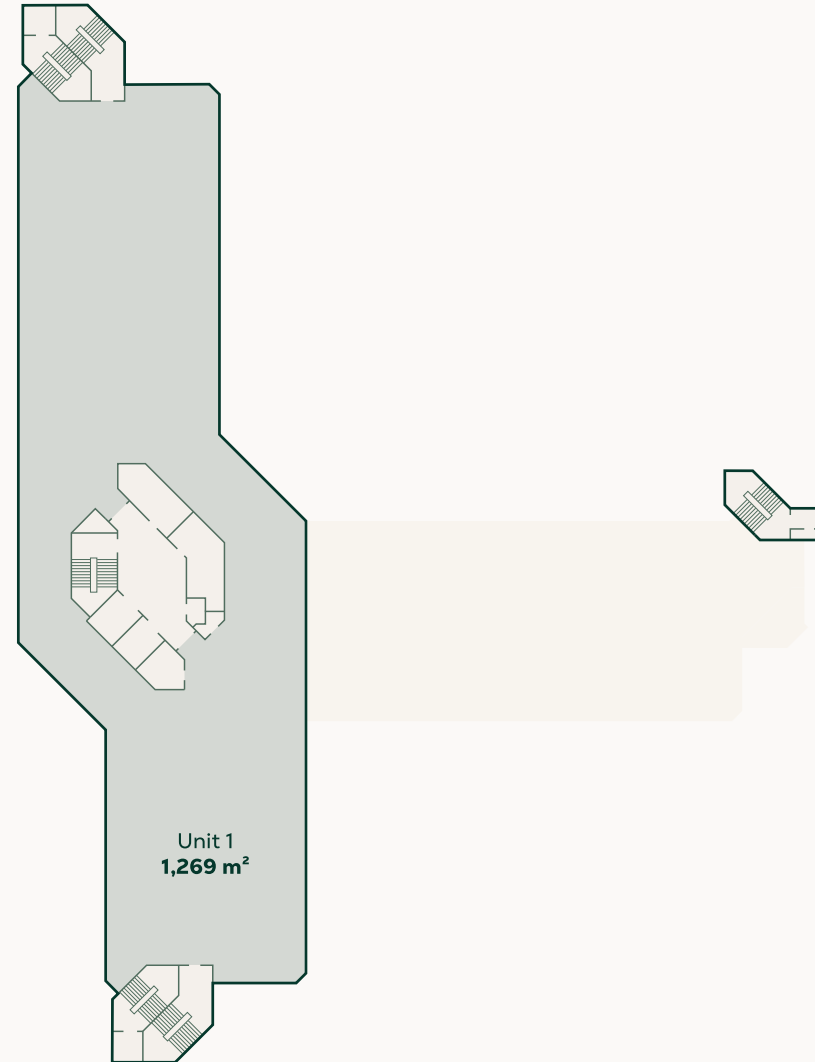


AUSTRALIA

Floor 3

The second floor has one unit of 1,269 m² and is currently fully let.

-  Common space
-  Available office space
-  Non-available office space





Contact

CBRE

Elianne Gales
Consultant

CBRE B.V. | Advisory & Transaction Services
Anthony Fokkerweg 15 | 1059 CM Amsterdam
PO Box 7971 | 1008 AD Amsterdam
T +31 20 626 26 91 | M +31 615876741

elianne.gales@cbre.com

JLL

Sophie F. Fabius
Consultant

JLL - Agency | Offices Amsterdam
Parnassusweg 727. 1077 DG Amsterdam
PO. Box 75208, 1070 AE Amsterdam
T +31 20 5 405 405 | M. +31 6 82 50 26 65

sophie.fabius@eu.ill.com