



**All work.
All play.
All here.**

**ATLAS
ARENA**
Amsterdam

Welcome!

About us	3
Our mission	4
Accessibility	5
Nearby Leisure	6
Sustainability	7
Energy Performance Certificate	8
All work. All play. All here.	9
Working @Atlas	10
Explore the offices	11
Informal working spaces	12
Green Meeting Spot	13
What tenants say about us...	14
Asia	15
Convenience @Atlas	22
Explore hotspots	23
Campus Hotspots	24
Services	26
Community @Atlas	27
Atlas Events & News	28
Welcome to Atlas Square	30
Contact	31

About us

Atlas ArenA is a multifunctional office campus and business community in Amsterdam South-East – home to world-famous brands and businesses of all sizes. Designed to create a better work-life balance, employees enjoy modern offices with access to ultra-convenient services – giving them all they need to be focused and productive, relaxed and sociable.

[Show me more →](#)

**ATLAS
ARENA**





Our mission

Our mission is to build a business community that puts fun and wellbeing at the heart of the workplace.



Accessibility

Exceptional transport links – and only 20-minutes from the city centre – make Atlas a convenient destination for all Amsterdam and the Netherlands has to offer.

Amsterdam Bijlmer ArenaA – 8 min
Johan Cruijff ArenaA – 7 min



City Center Amsterdam – 27 min



Luchthaven Schiphol Airport – 28 min
Highways A2, A9 – 5 min
Highway A10 – 7 min
Highways A1, A4 – 11 min










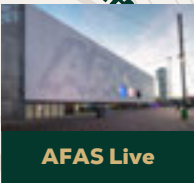
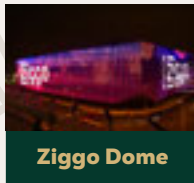
**ATLAS
ARENA**
Amsterdam

7min
550m

8min
600m

Nearby Leisure

-  Shop
-  Concert hall
-  Arena
-  Restaurant
-  Hotel
-  Sports complex
-  Cinema



Ahrend Inspiration Centre Amsterdam

Sustainability

Atlas ArenA does everything with sustainability in mind, and we constantly strive to reduce our impact on the environment and improve our area's biodiversity.



Electric charging



Sustainable partnering



Green energy



Biodiversity



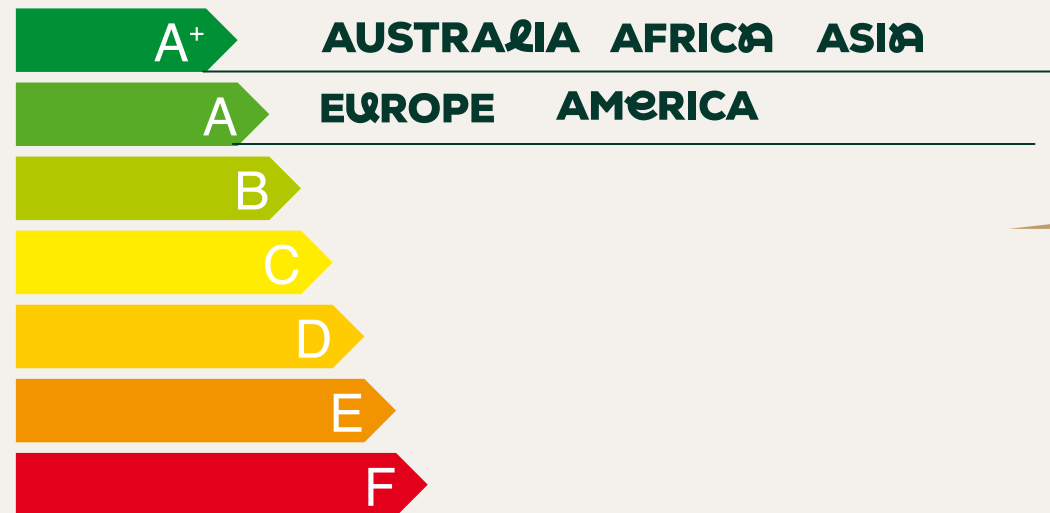
City cooling



Energy efficiency

Energy Performance Certificate

Each building has recently been certified with an A or A+ energy level.



WORKING @ATLAS

Home to world-famous brands, we offer exceptional quality, spacious multi-use office space for businesses of all sizes.



CONVENIENCE @ATLAS

Life is a lot easier at Atlas. Have your laundry, your car and even your kids taken care of. Work out, eat out, chill out – all right here.

COMMUNITY @ATLAS

If you work here, you're one of us. That means you benefit from homegrown entertainment and events, offers and opportunities. And so much more.



All work. All play. All here.

Life at Atlas ArenA is all about a better work-life balance, with all you need to be focused and productive, relaxed and sociable.

WORKING @ATLAS

World-famous brands, local businesses and over 4,500 workers make Atlas Arena their home – enjoying inspiring offices, superb facilities and plenty of perks.



Working



**Green Meeting
Spot**

**ATLAS
ARENA**



Explore the offices

From entire floors to cosy corners, companies benefit from 75,000 m² of offices across five fully refurbished buildings – with the flexibility to make the space their own.

Working and meeting spaces

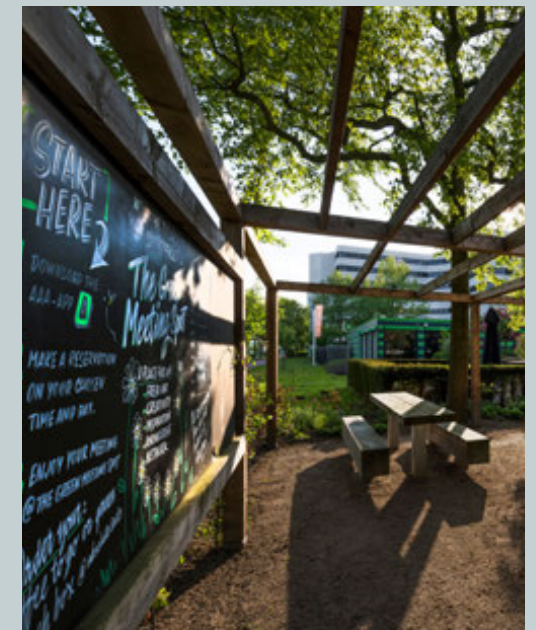
Besides a wonderful multifunctional and spacious ground floor, the Europe building offers 3 formal meeting rooms, all equipped with audiovisual tools, and 1 inspiration room for brainstorming sessions and informal meetings.





GREEN MEETING SPOT

An outside office? Surrounded by trees and wildflowers? With rock-solid wifi and power points? Yep. Run your meetings in the sunshine and let your ideas soar.



Power
points



Rock solid
Wi-Fi



What tenants say about us...

“

Atlas ArenA keeps improving and developing to make it's environment a nice and convenient campus. A central place where you can find everything you need within reach, from office spaces and meeting rooms to restaurants and more. Atlas ArenA, an ideal place to work at!”

Eco-Wessanen
Asia Building

“

A shop, a restaurant, lovely surroundings, a bar that fits our vrijmibo-needs perfectly and being greeted by the very lovely Atlas ArenA-people every morning. What more could one ask for?”

Brand New Day
America Building

“

For us, it really feels like working on a campus. Bustle between the buildings, shops nearby, and various food and beverage options for pleasant get-togethers with colleagues. And don't forget parking and public transport around the corner. Our private office floor has a lot of light with a clean and spacious common area.”

ABN AMRO Pensioenfonds
Australia Building

“

Never a dull moment @ Atlas ArenA! Fun events, great dining options, and lots of greenery! Personally, I think the outdoor meeting garden is brilliant”

IQ EQ
America Building

“

All the green around the buildings and the beautiful Sequoias encourage our employees to have their informal meetings outside whenever possible. Not to forget the events, like tulips picking, volleyball tournaments, food truck week, which are making life on the campus a lot more fun and provides us with possibilities for networking. Last but definitely not least, the flexibility we have within the buildings gives us the possibility to create the best workplace for our adidas employees!”

adidas
Africa Building





Hoogoorddreef 5,
1101BA Amsterdam



ASIA

At 21,000 m², Asia is the second largest building and its brand new entrance area offers plenty of outdoor seating for informal meetings and breaks.

Available office space	Rental price LFA p/y	Rental price per parking space p/y	Service costs per m ² LFA p/y
3,610m ²	On request	On request	On request



Renovated Entrance



Coffee Corner



Characteristics



Openable windows



Six elevators



50 watts cooling capacity per m²



Efficient layout office floors



Ventilation rate 2.5-fold based on 100% fresh air



Electric parking stations



Parking ratio 1 in 100, additional parking available

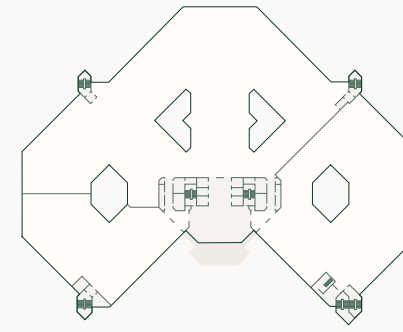


LED-lighting

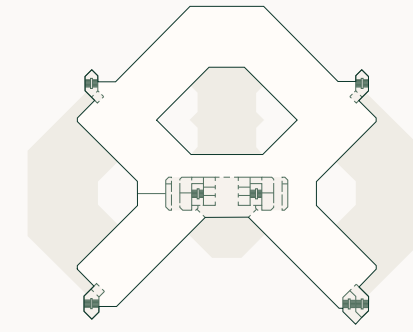
ASIA

The Asia building has a total floor area of 21,641 m².

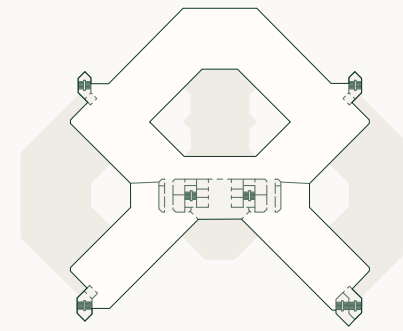
Floor 1 - unit 2	564 m ²
Floor 3	2,413 m ²
Floor 6 - unit 2	633 m ²
Total available space	3,610 m²



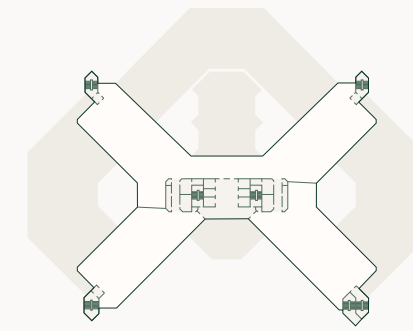
Ground floor



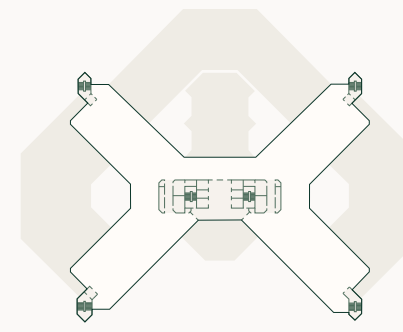
Floor 1



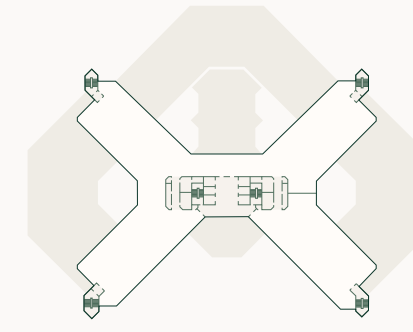
Floor 2



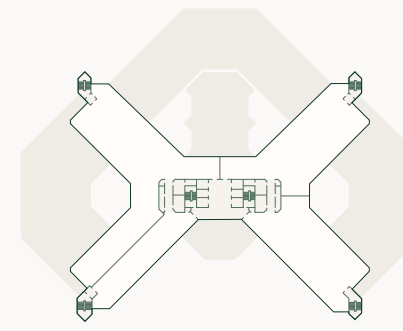
Floor 3



Floor 4

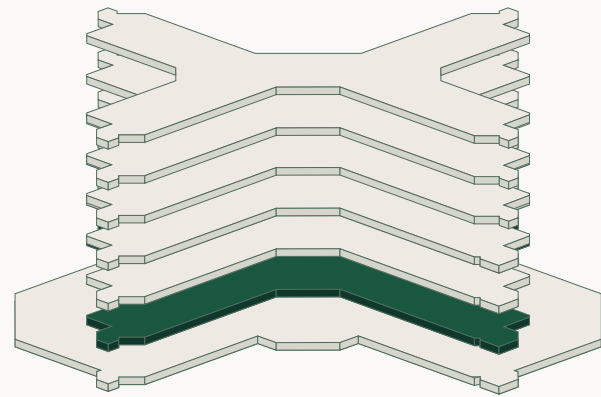


Floor 5



Floor 6

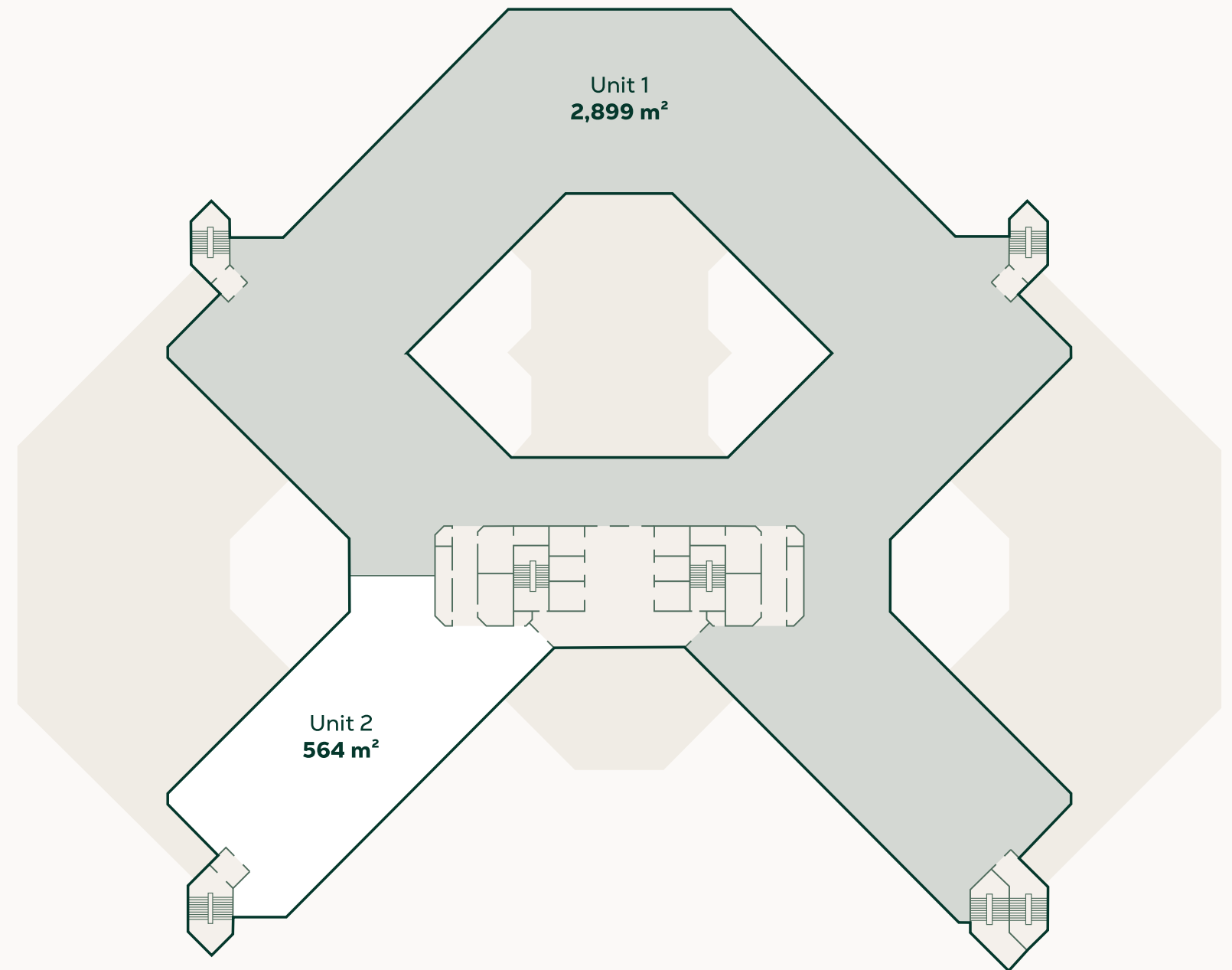




ASIA

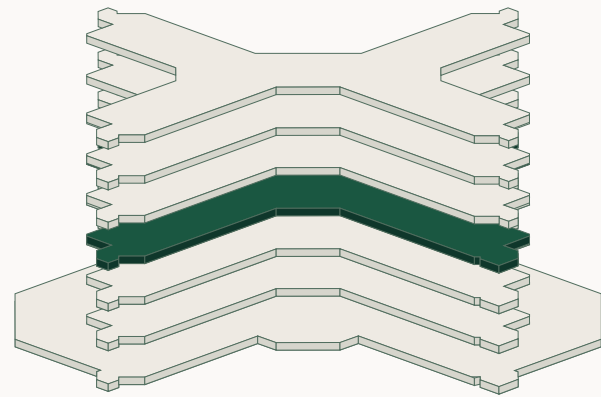
Floor 1

The first floor is divided into 2 units and has a total lettable floor area of 3,463 m². Unit 2, 564 m², is currently available.



- Common space
- Available office space
- Non-available office space

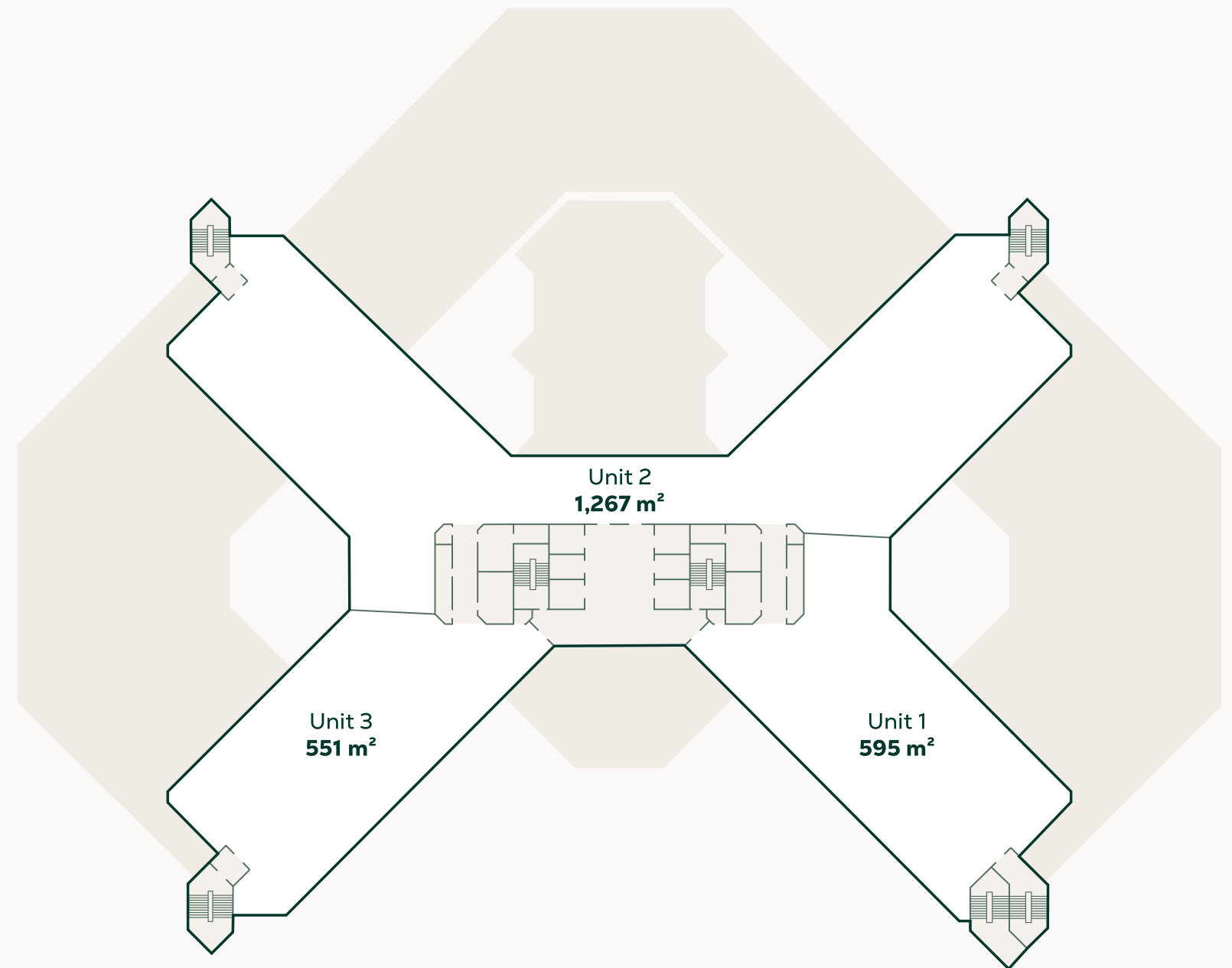
0 5 10 15 20 25 m

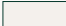

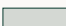


ASIA

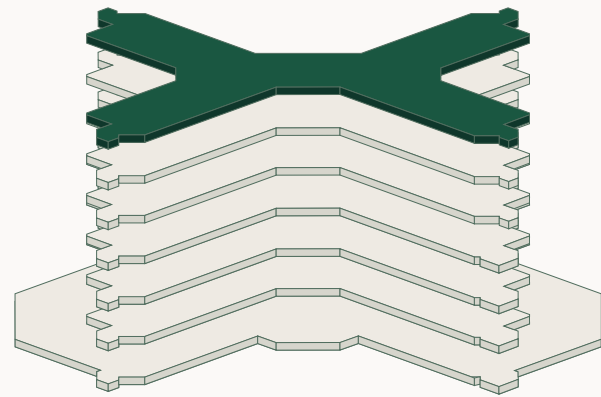
Floor 3

The third floor is divided into 3 units and has a total lettable floor area of 2,413 m². All units as per 1 July 2025.



-  Common space
-  Available office space
-  Non-available office space

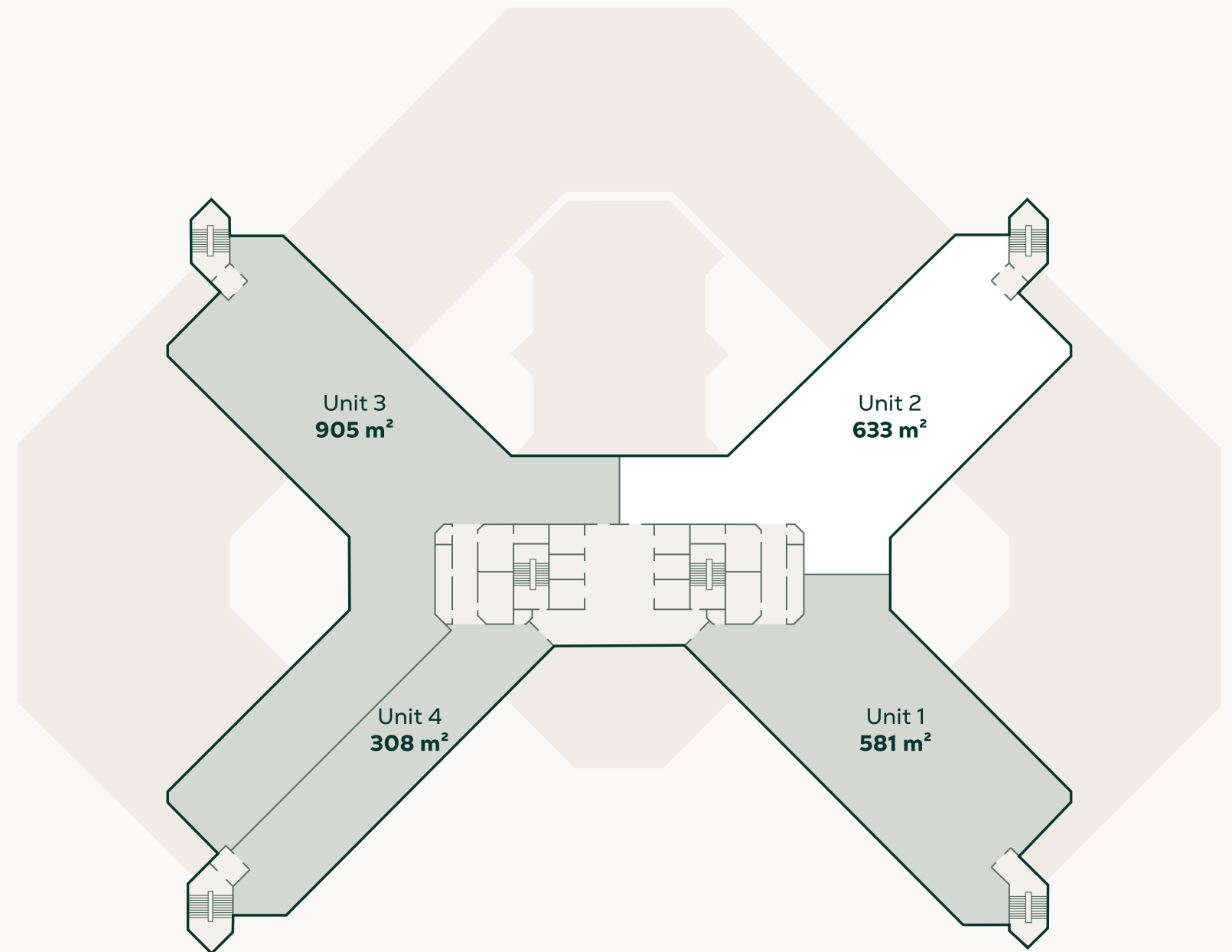
0 5 10 15 20 25 m



ASIA

Floor 6

The sixth floor is divided into 4 units and has a total lettable floor area of 2,427 m². Unit 1, 581 m², and unit 2, 633 m², are currently available.



- Common space
- Available office space
- Non-available office space

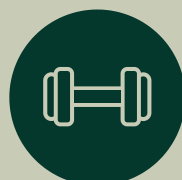
0 5 10 15 20 25 m

CONVENIENCE @ATLAS

Life is a lot little easier (and way more fun) around Atlas. Have your car and even your kids taken care of. Work out, eat out, chill out – all here.



Hotel



Gym



Food



Nanny service



Flower service



Carwash



Bike service



Car charging





Explore the hotspots

Atlas Arena offers everything you need, all in one place. Various options to eat & drink, to work out and play out.

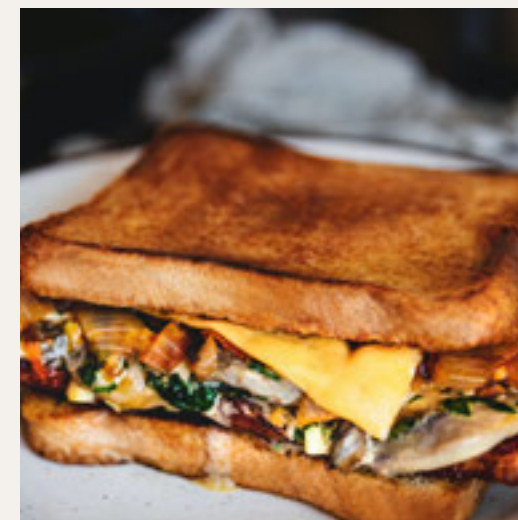
Campus Hotspots

Designed to create a better work-life balance, employees enjoy modern offices with access to ultra-convenient services – giving them all they need to be focused and productive, relaxed and sociable.

**ATLAS
ARENA**

ATLAS BREAK

Our in-house cafe is open for breakfast and lunch, eat-in or takeaway. So you can meet a colleague for an oat milk latte, have sandwiches delivered to your desk or grab a salad to go.

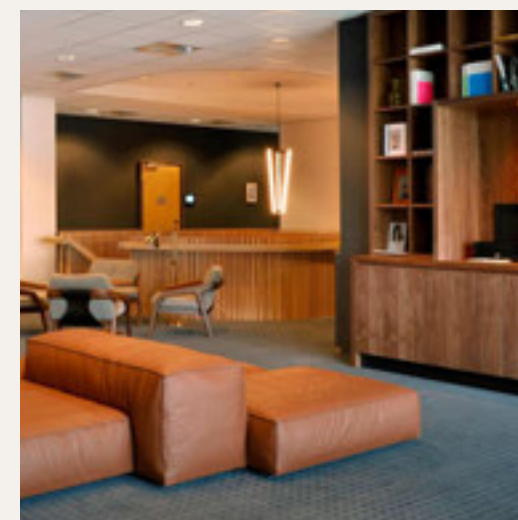


ATLAS TASTE

Our kitchen is designed for relaxed lunches, dinner, meetings, and office events with delicious cocktails and sharing platters on an ever-changing menu. Book here (or just turn up) for vibrant food, service and atmosphere 7-days a week. It's also the perfect venue for outdoor team BBQs in summer and lively parties over Christmas.

ATLAS HOTEL

Our on-site hotel is part of the premium 'Courtyard by Marriott' family. It features luxurious and contemporary design and stylish rooms, along with its own gym and restaurant. Its convenient location with easy access to all of Amsterdam makes it the perfect place to host clients, colleagues and guests.





STACH

Fuel yourself with STACH's famous coffee and fresh food - available in building Europe. Whether it's fruit salads, crispy croissants, fancy sandwiches or spicy wraps, the kitchen provides nice, healthy and tasty snacks all day long.



ATLAS KIDS

Run by CompaNanny, Atlas Kids offers convenient and exceptional quality daycare for babies and children aged up to 4 years old. Fully qualified nannies provide a caring, creative and healthy environment where your children will thrive. Located in the America building, it's close to the office for easy drop-offs, pick-ups and peace of mind.

GREEN MEETING SPOT

During the summer season, Atlas provides on-campus outside working spots for you to do a brainstorm session, grab lunch or have a meeting.



ATLAS GYM

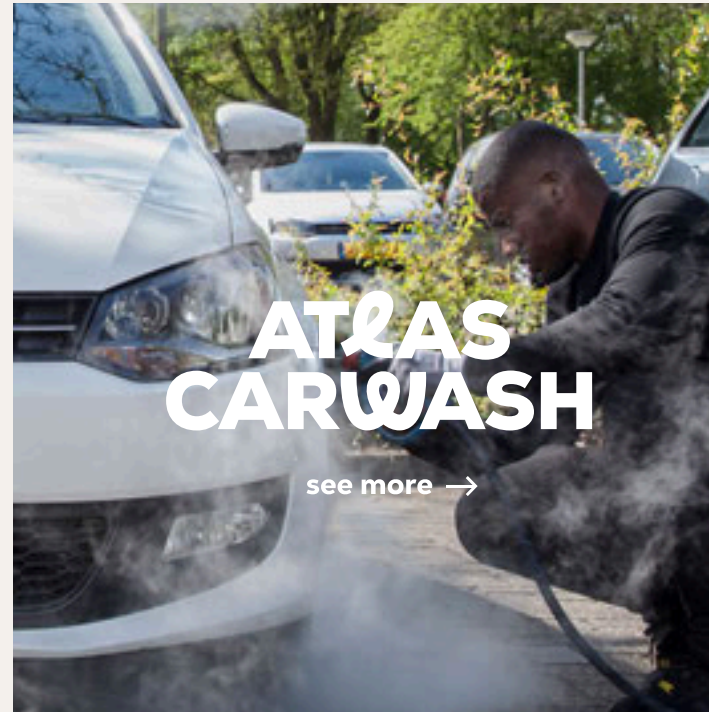
This sports school provides a wide-ranging training programme that is suitable for every level of fitness. Here you'll find a pull-up bar, ropes, weights, rings and rowing machines.





ATLAS CHARGE

[see more →](#)



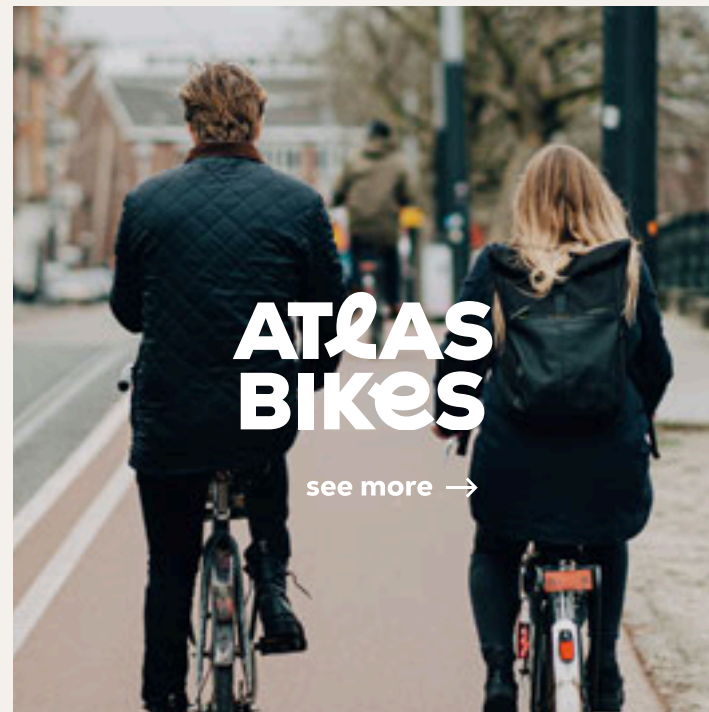
ATLAS CARWASH

[see more →](#)



ATLAS FLOWERS

[see more →](#)



ATLAS BIKES

[see more →](#)

Services

The Personal Convenience Services make life just that little bit easier. No longer will you have to queue at the car wash or waste your free Saturday afternoon getting your shoes repaired or taking clothes to the cleaners. You can even have sandwiches or flowers delivered. All while you're at work. Fast, safe, but above all very easy.

COMMUNITY @ATLAS

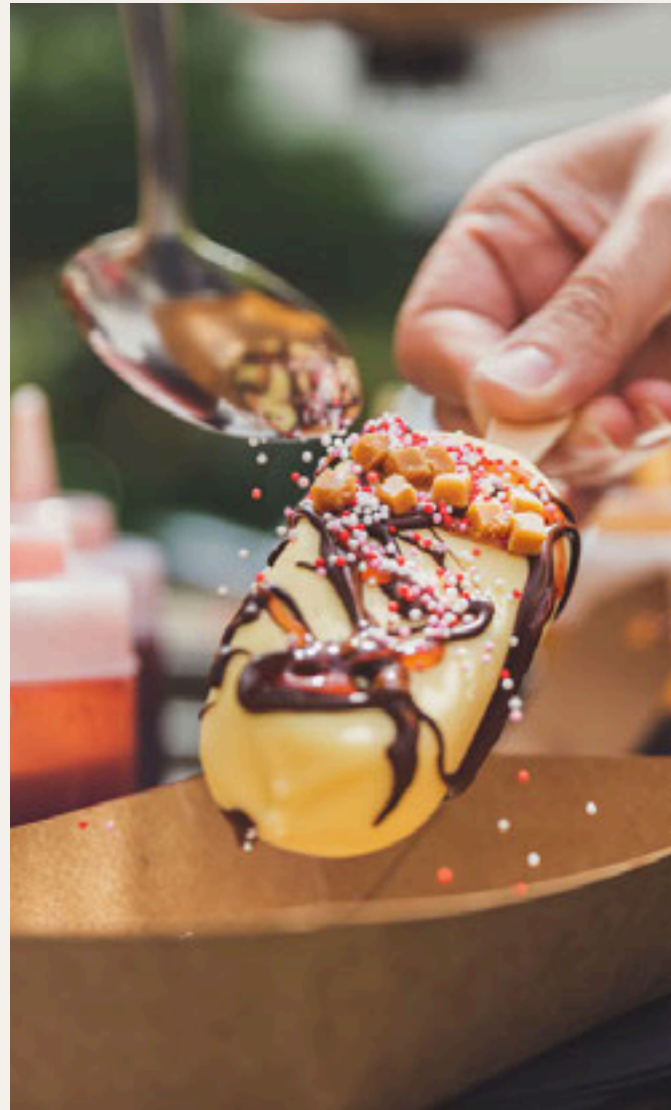
If you work here, you're one of us.
In other words, you're an Atlasseer!
Together we're creating a unique
workplace centred around wellbeing,
happiness and a real sense of community.



Events



News



Atlas Events & News

Come along to our homegrown events, talks, markets, and more – hosted on-site across our generous communal areas, gardens, and tree-lined AAA Square.

The News is where we share what's happening in and around the campus to help our community stay connected.

[Read news & see events →](#)



Annual Events

- Volleyball tournament
- Foodtruck festival
- Tulip picking garden
- Pimp your Magnum
- Pubquiz
- & more

[Read news & see events →](#)



Welcome to Atlas Square

The heart of Atlas Arena is our very own 'town square' - a beautiful, green space with places to relax, to wander, host meetings, play table tennis or chess, be part of a pop-up event or put on your own party.



Table tennis



Lounge sets



Chess



Contact

CBRE

Elianne Gales
Consultant
CBRE B.V. | Advisory & Transaction Services
Anthony Fokkerweg 15 | 1059 CM Amsterdam
PO Box 7971 | 1008 AD Amsterdam
T +31 20 626 26 91 | M +31 615876741
elianne.gales@cbre.com

JLL

Sophie F. Fabius
Consultant
JLL - Agency | Offices Amsterdam
Parnassusweg 727, 1077 DG Amsterdam
P.O. Box 75208, 1070 AE Amsterdam
T +31 20 5 405 405 | M: +31 6 82 50 26 65
sophie.fabius@jll.com

