

**ATLAS
ARENA**
Amsterdam

ASIA

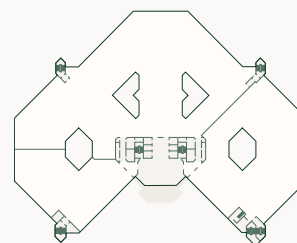
Building floor plans



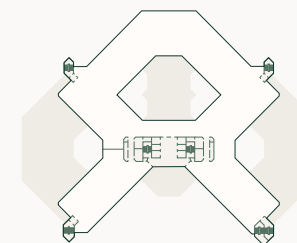
ASIA

The Asia building has a total floor area of 21,641 m².

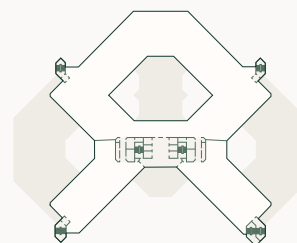
Floor 1 - unit 2	564 m ²
Floor 3	2,413 m ²
Floor 6 - unit 2	633 m ²
Total available space	3,610 m²



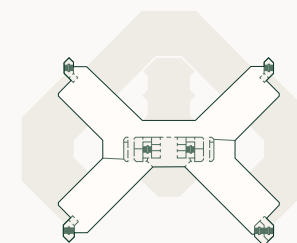
Ground floor



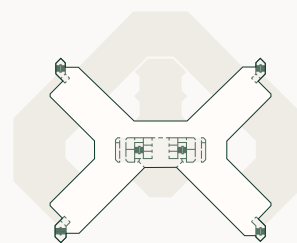
Floor 1



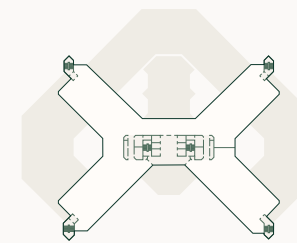
Floor 2



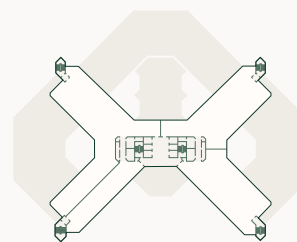
Floor 3



Floor 4

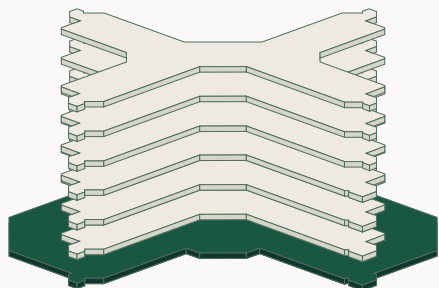


Floor 5



Floor 6

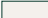

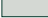


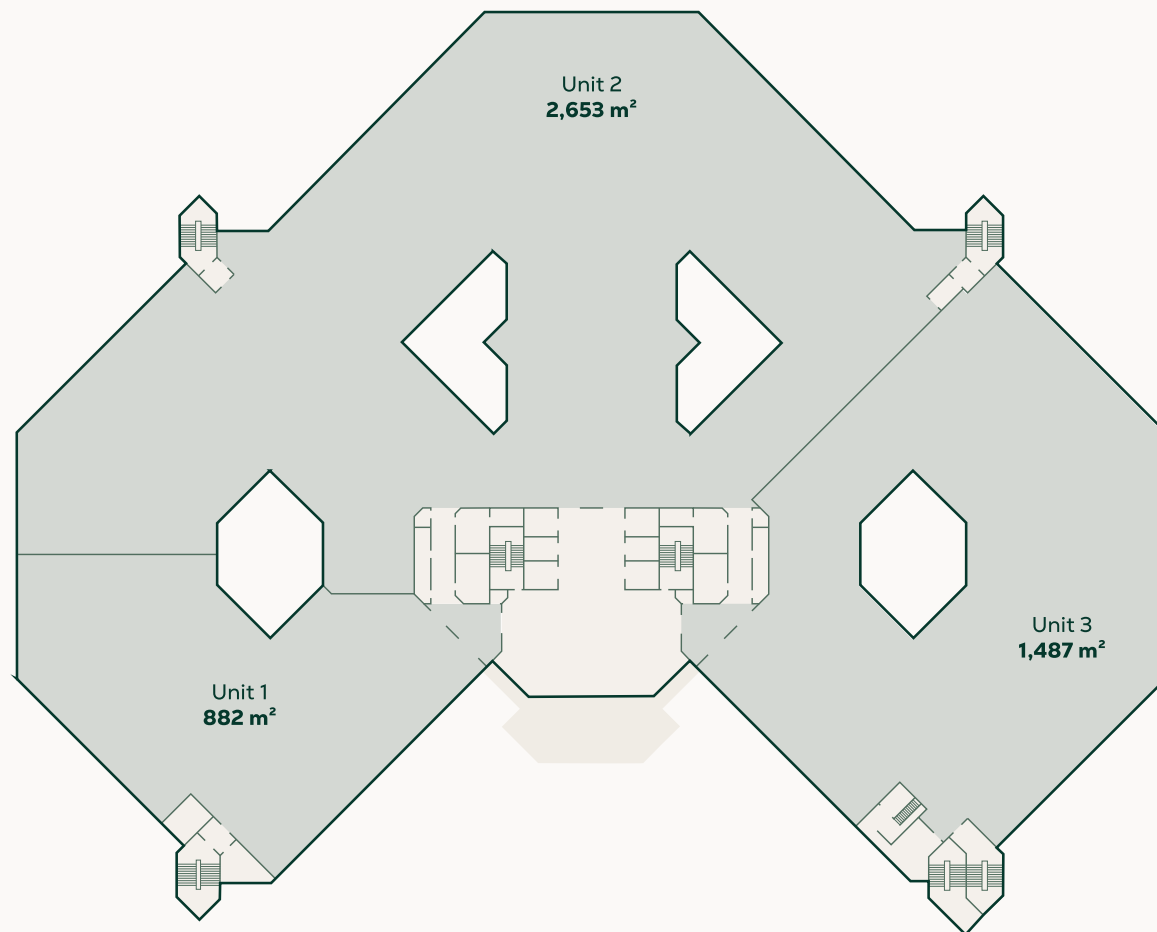


ASIA

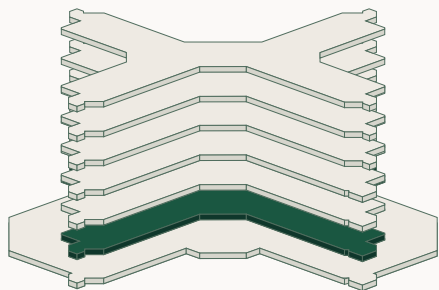
Ground floor

The ground floor is divided into 3 units and has a total lettable floor area of 5,022 m². The ground floor is currently fully let. The ground floor has recently been renovated and has a reception with coffee corner.

-  Common space
-  Available office space
-  Non-available office space



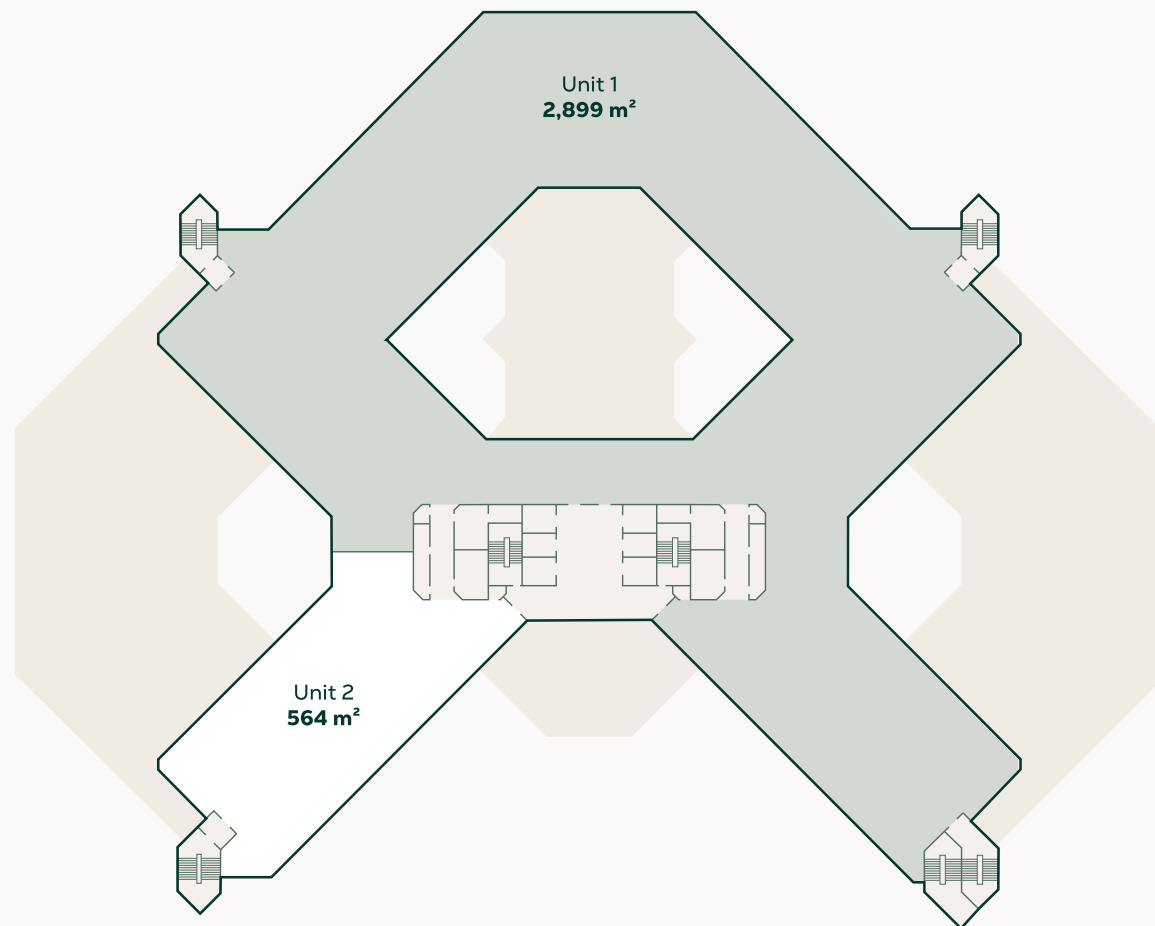
0 5 10 15 20 25 m



ASIA

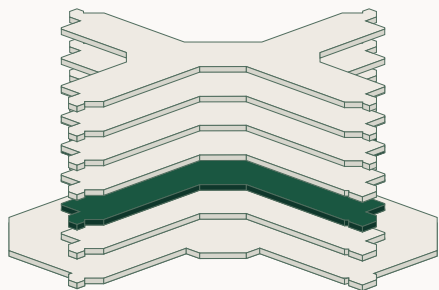
Floor 1

The first floor is divided into 2 units and has a total lettable floor area of 3,463 m². Unit 2, 564 m², is currently available.



- Common space
- Available office space
- Non-available office space

0 5 10 15 20 25 m

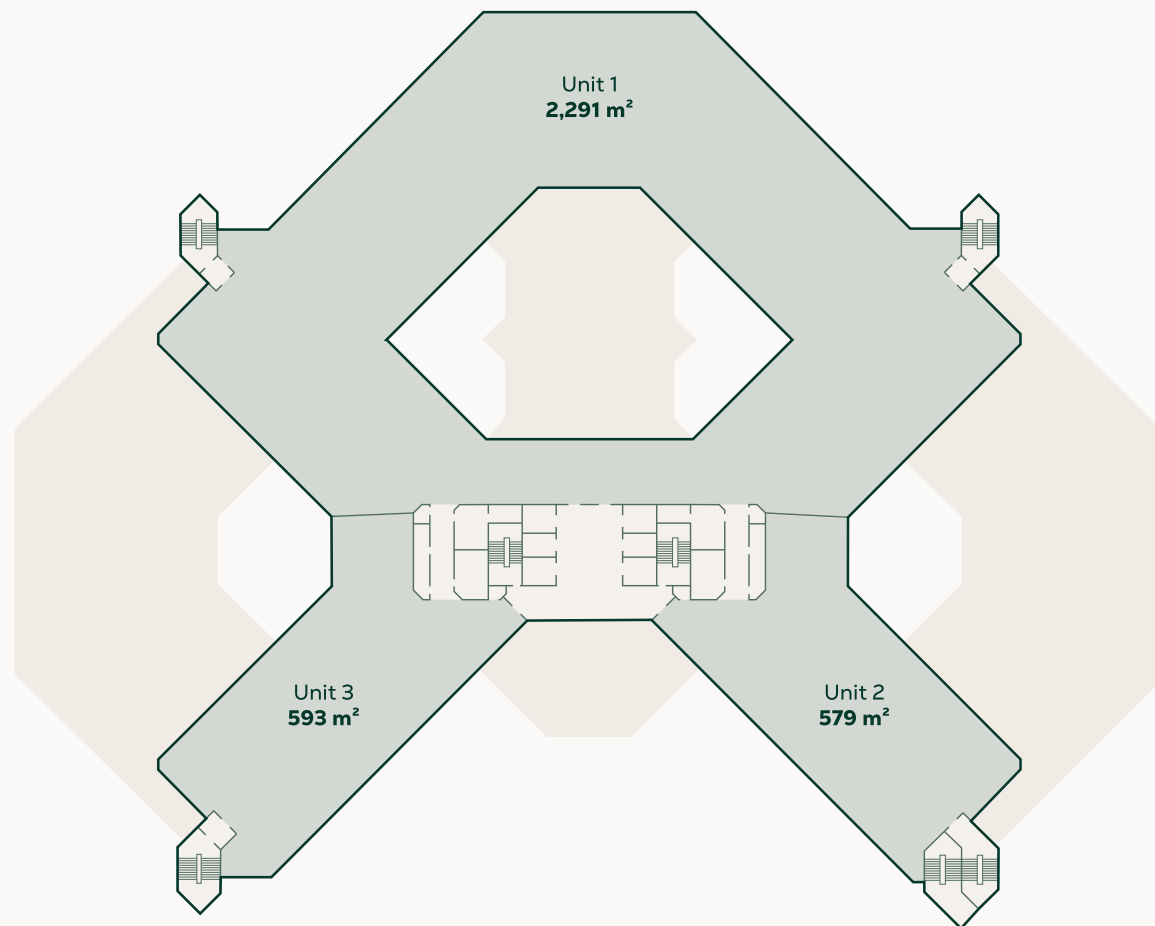


ASIA

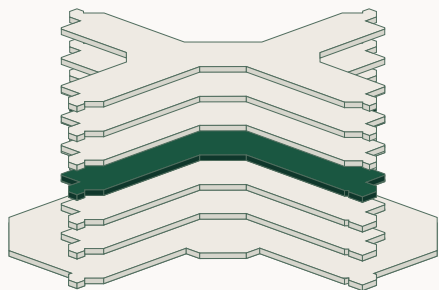
Floor 2

The second floor is divided into 3 units and has a total lettable floor area of 3,469 m². The second floor is currently fully let.

- Common space
- Available office space
- Non-available office space



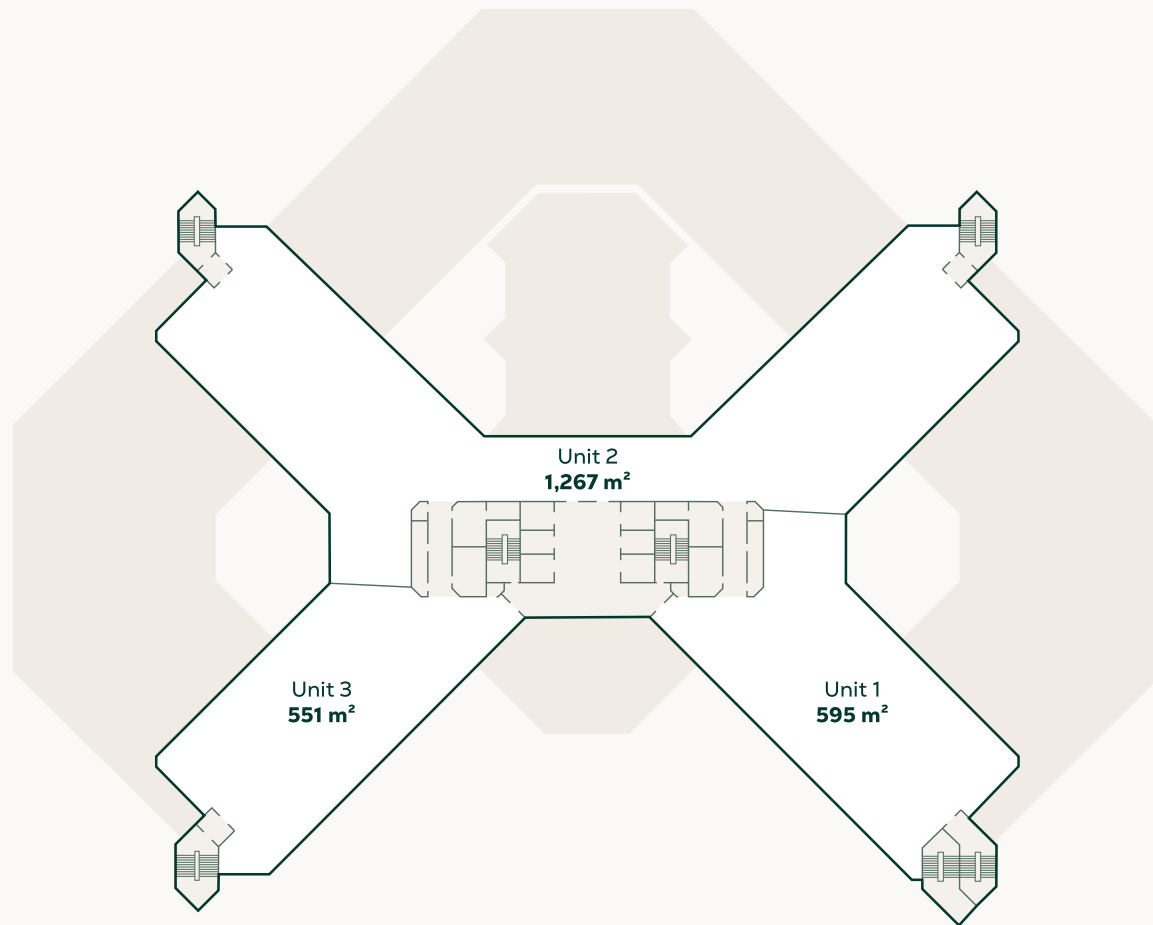
0 5 10 15 20 25 m



ASIA

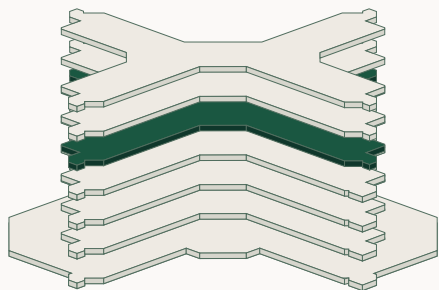
Floor 3

The third floor is divided into 3 units and has a total lettable floor area of 2,413 m². All units are currently available.



- Common space
- Available office space
- Non-available office space

0 5 10 15 20 25 m

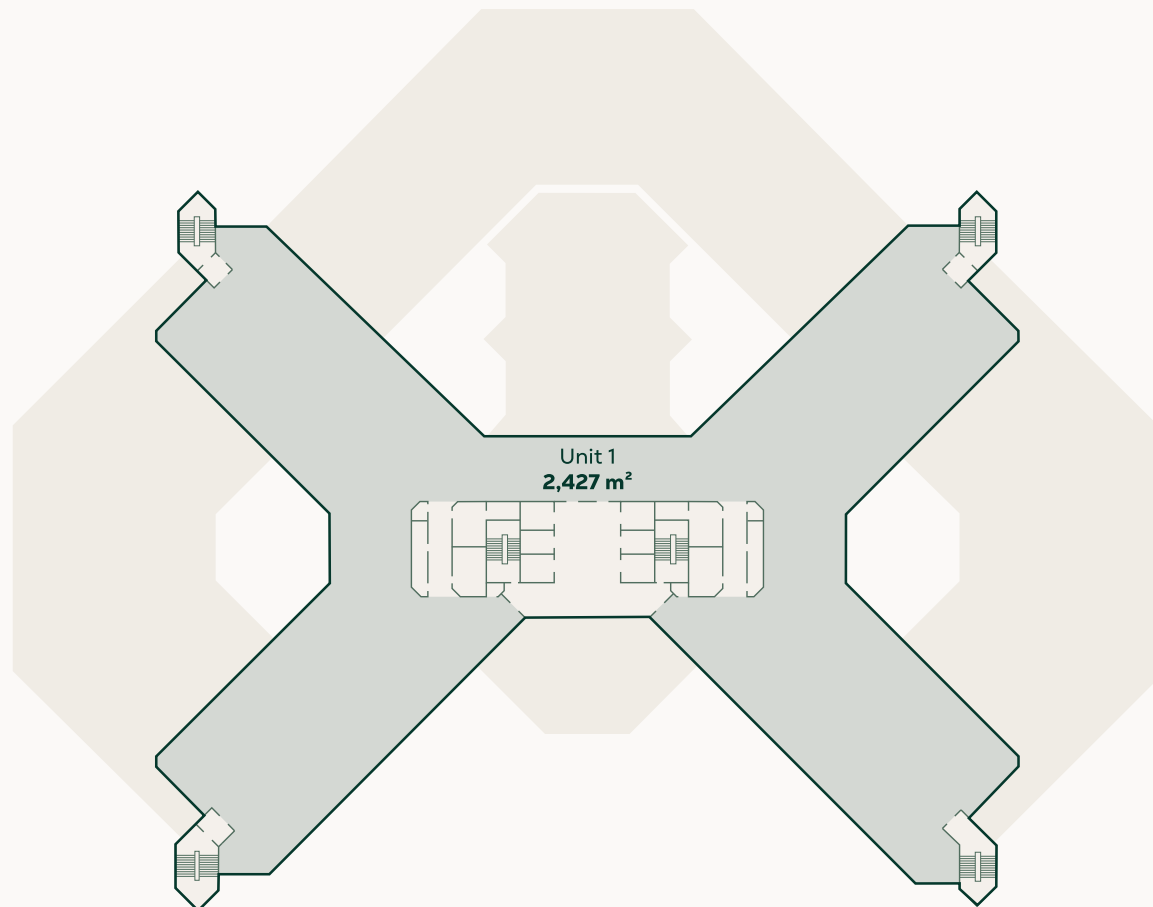


ASIA

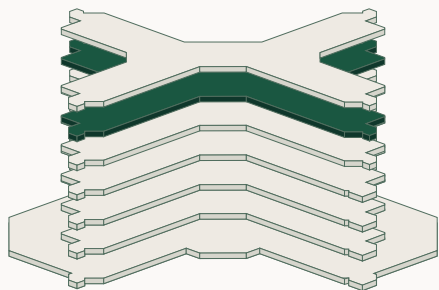
Floor 4

The fourth floor is divided into 3 units and has a total lettable floor area of 2,427 m². The fourth floor is currently fully let.

- Common space
- Available office space
- Non-available office space



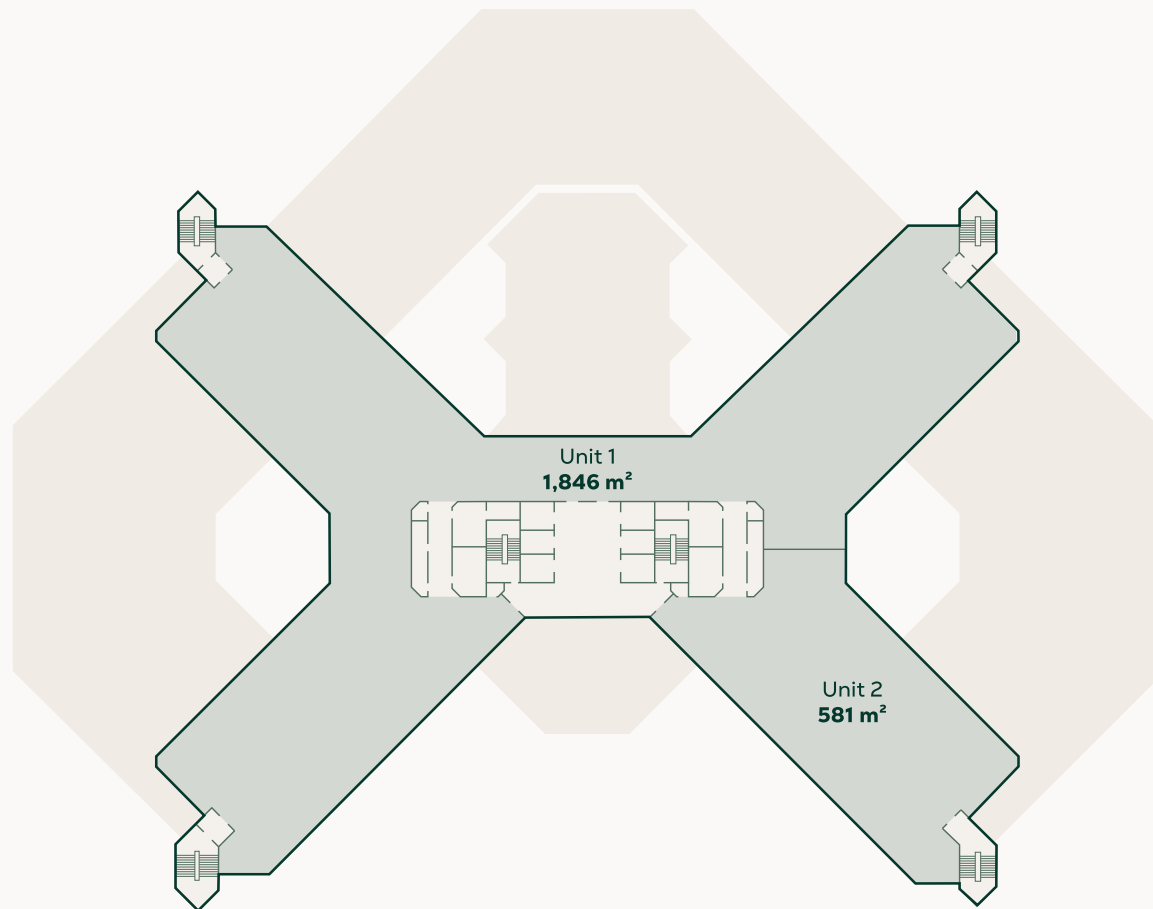
0 5 10 15 20 25 m



ASIA

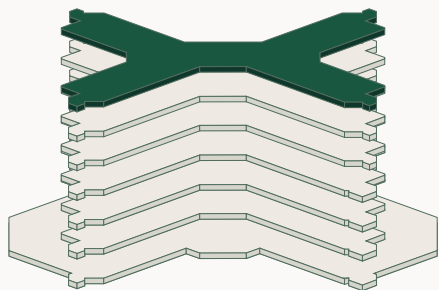
Floor 5

The fifth floor is divided into 2 units and has a total lettable floor area of 2,427 m². Unit 2, 581 m², is currently available.



- Common space
- Available office space
- Non-available office space

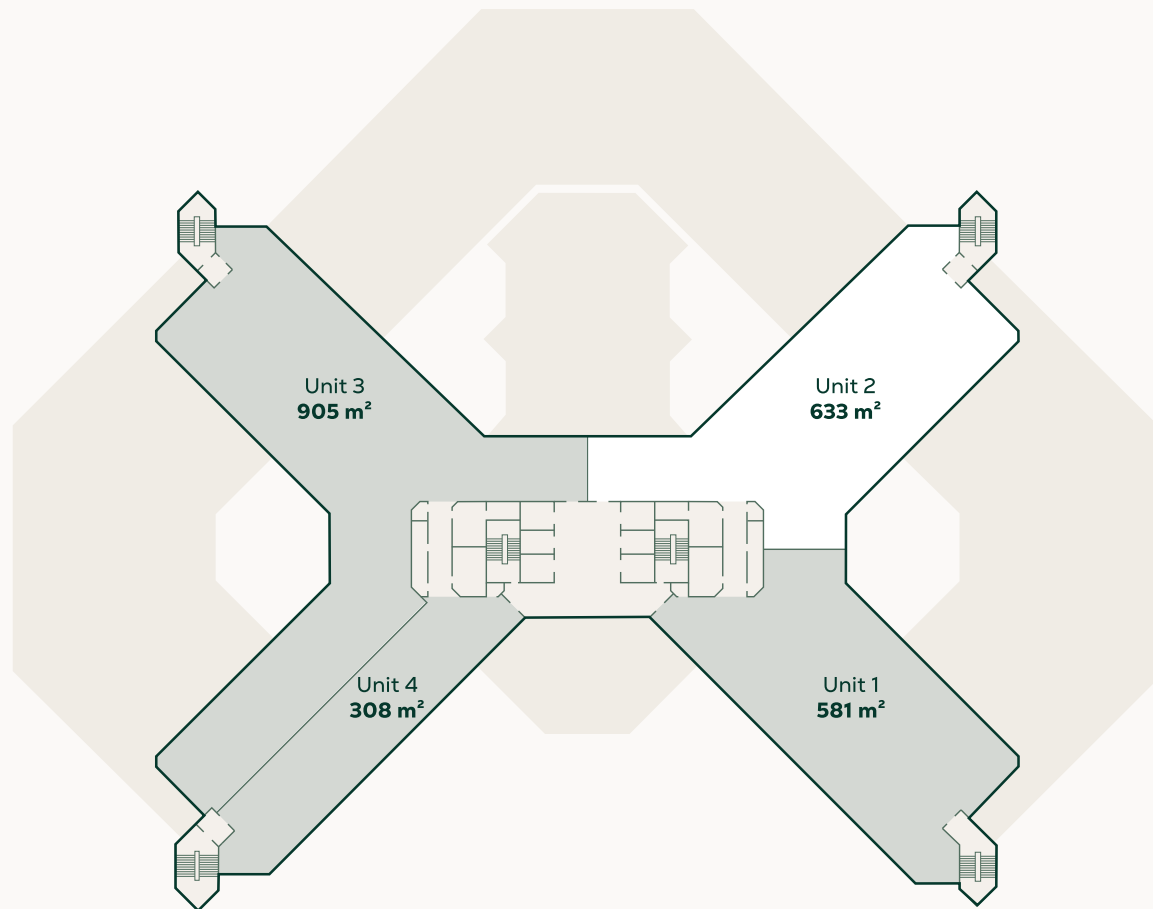
0 5 10 15 20 25 m



ASIA

Floor 6

The sixth floor is divided into 4 units and has a total lettable floor area of 2,427 m². Unit 2, 633 m² is currently available.



- Common space
- Available office space
- Non-available office space

0 5 10 15 20 25 m



Contact

CBRE

Elianne Gales
Consultant

CBRE B.V. | Advisory & Transaction Services
Anthony Fokkerweg 15 | 1059 CM Amsterdam
PO Box 7971 | 1008 AD Amsterdam
T +31 20 626 26 91 | M +31 615876741

elianne.gales@cbre.com

JLL

Sophie F. Fabius
Consultant

JLL - Agency | Offices Amsterdam
Parnassusweg 727 | 1077 DG Amsterdam
PO. Box 75208, 1070 AE Amsterdam
T +31 20 5 405 405 | M. +31 6 82 50 26 65

sophie.fabius@jll.com