

**ATLAS  
ARENA**  
Amsterdam

# AUSTRALIA

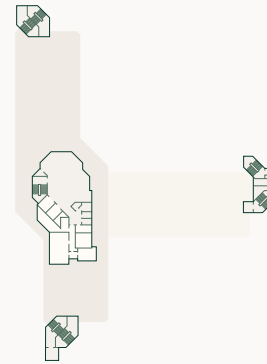
Building floor plans



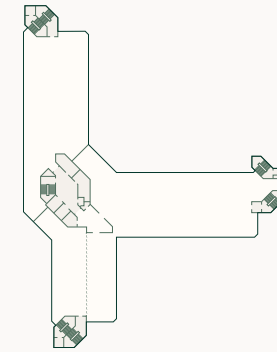
# AUSTRALIA

The Australia building has a total floor area of 5,150 m<sup>2</sup> and is our smallest building.

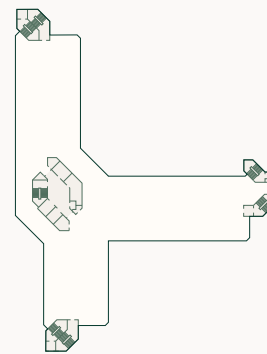
Total office space **5,150 m<sup>2</sup>**  
Total available space **Fully let**



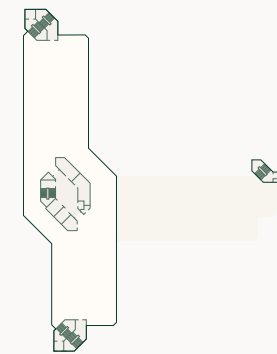
Ground floor



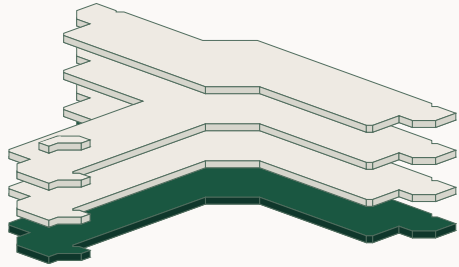
Floor 1



Floor 2



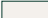

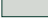
Floor 3

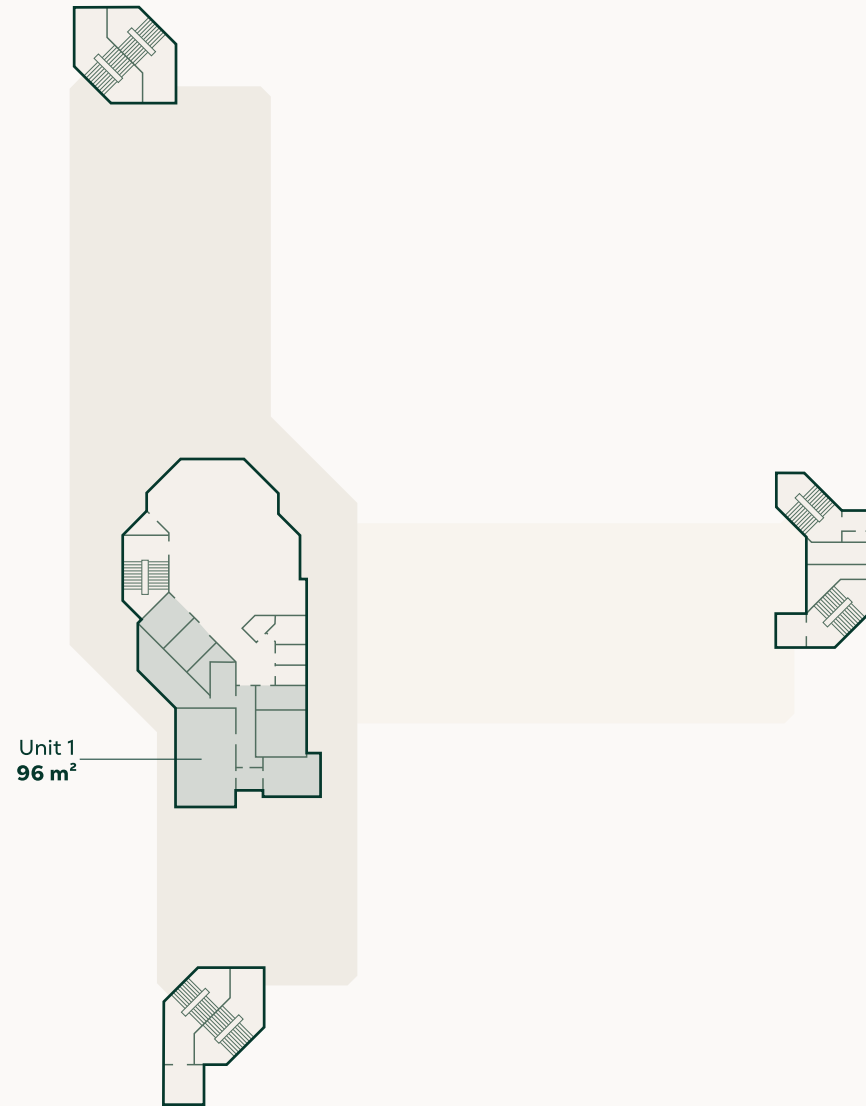


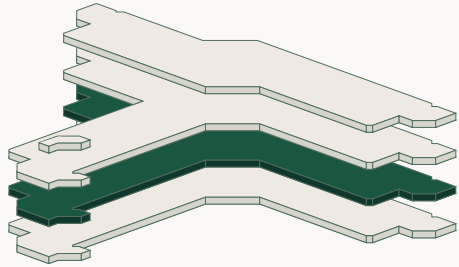
**AUSTRALIA**

# Ground floor

The ground floor is divided into lettable space and common space. The lettable space consists of 96 m<sup>2</sup> and is currently occupied.

-  Common space
-  Available office space
-  Non-available office space

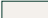




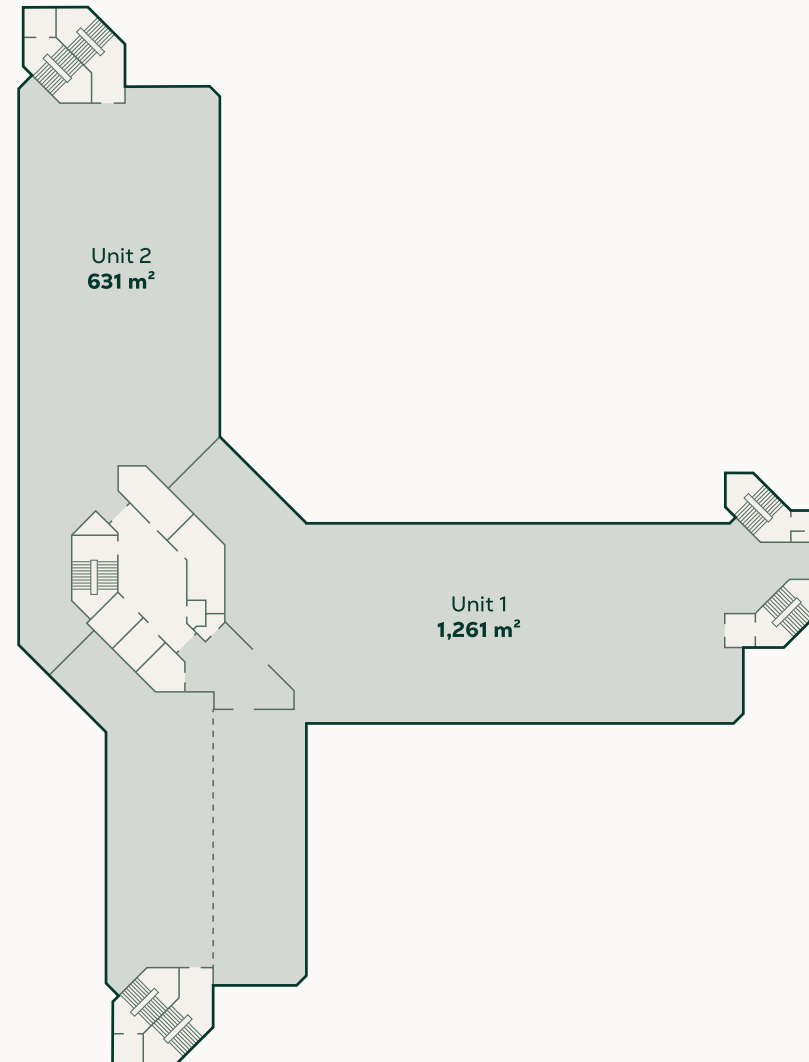


**AUSTRALIA**

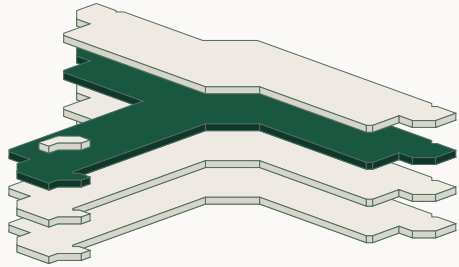
# Floor 1

The first floor is divided into two units. The lettable space consists of 1,892 m<sup>2</sup> and is currently occupied.

-  Common space
-  Available office space
-  Non-available office space



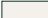

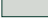
0 5 10 15 20 25 m

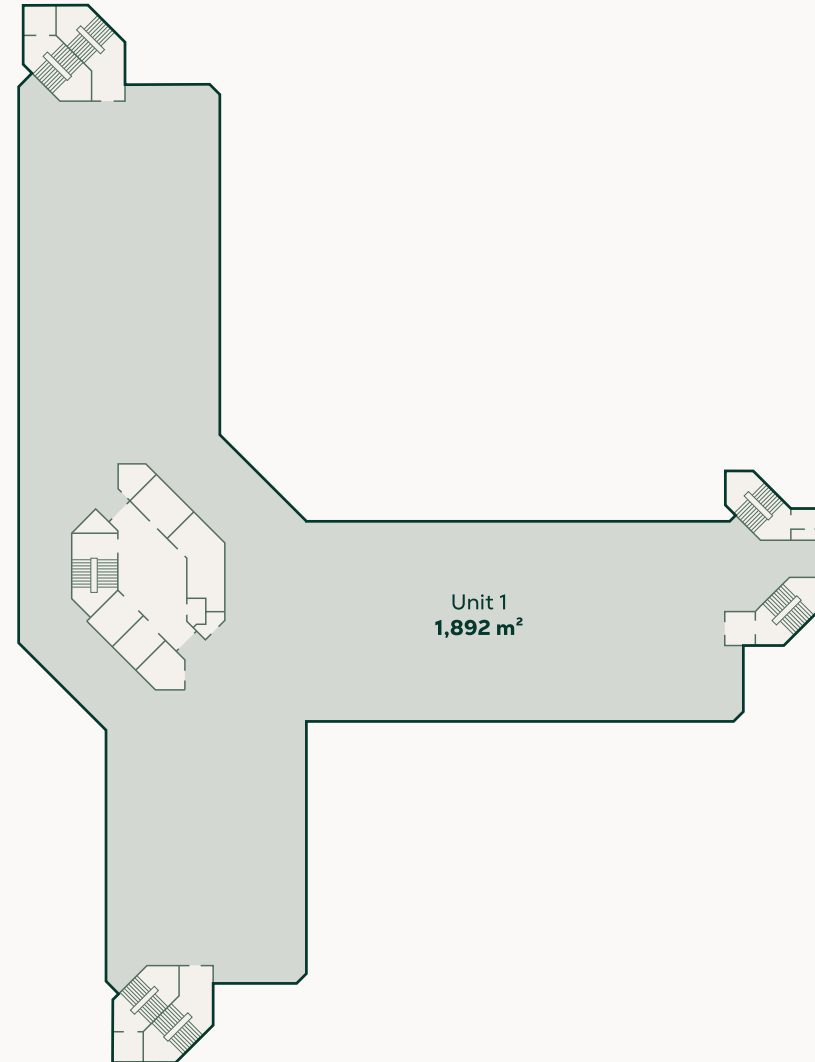


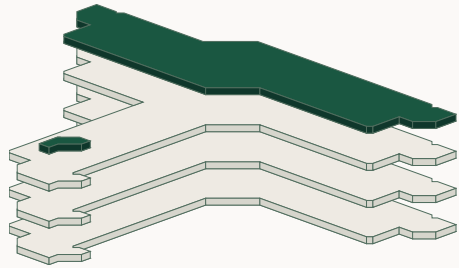
**AUSTRALIA**

# Floor 2

The second floor has one unit of 1,892 m<sup>2</sup> and is currently fully let.

-  Common space
-  Available office space
-  Non-available office space

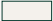




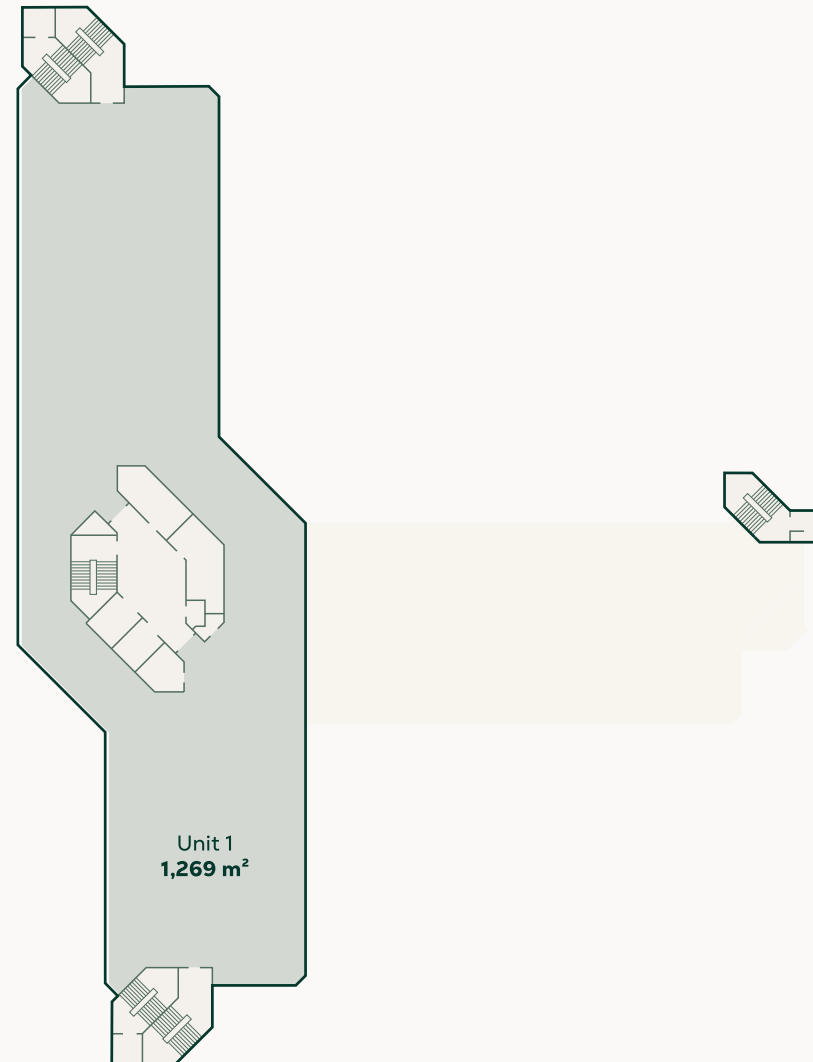


**AUSTRALIA**

# Floor 3

The third floor has one units. The lettable space consists of 1,269 m<sup>2</sup> and is currently occupied.

-  Common space
-  Available office space
-  Non-available office space





# Contact

## **CBRE**

Elianne Gales  
Consultant

CBRE B.V. | Advisory & Transaction Services  
Anthony Fokkerweg 15 | 1059 CM Amsterdam  
PO Box 7971 | 1008 AD Amsterdam  
T +31 20 626 26 91 | M +31 615876741

[elianne.gales@cbre.com](mailto:elianne.gales@cbre.com)

## **JLL**

Sophie F. Fabius  
Consultant

JLL - Agency | Offices Amsterdam  
Parnassusweg 727 | 1077 DG Amsterdam  
PO. Box 75208, 1070 AE Amsterdam  
T +31 20 5 405 405 | M. +31 6 82 50 26 65

[sophie.fabius@jll.com](mailto:sophie.fabius@jll.com)